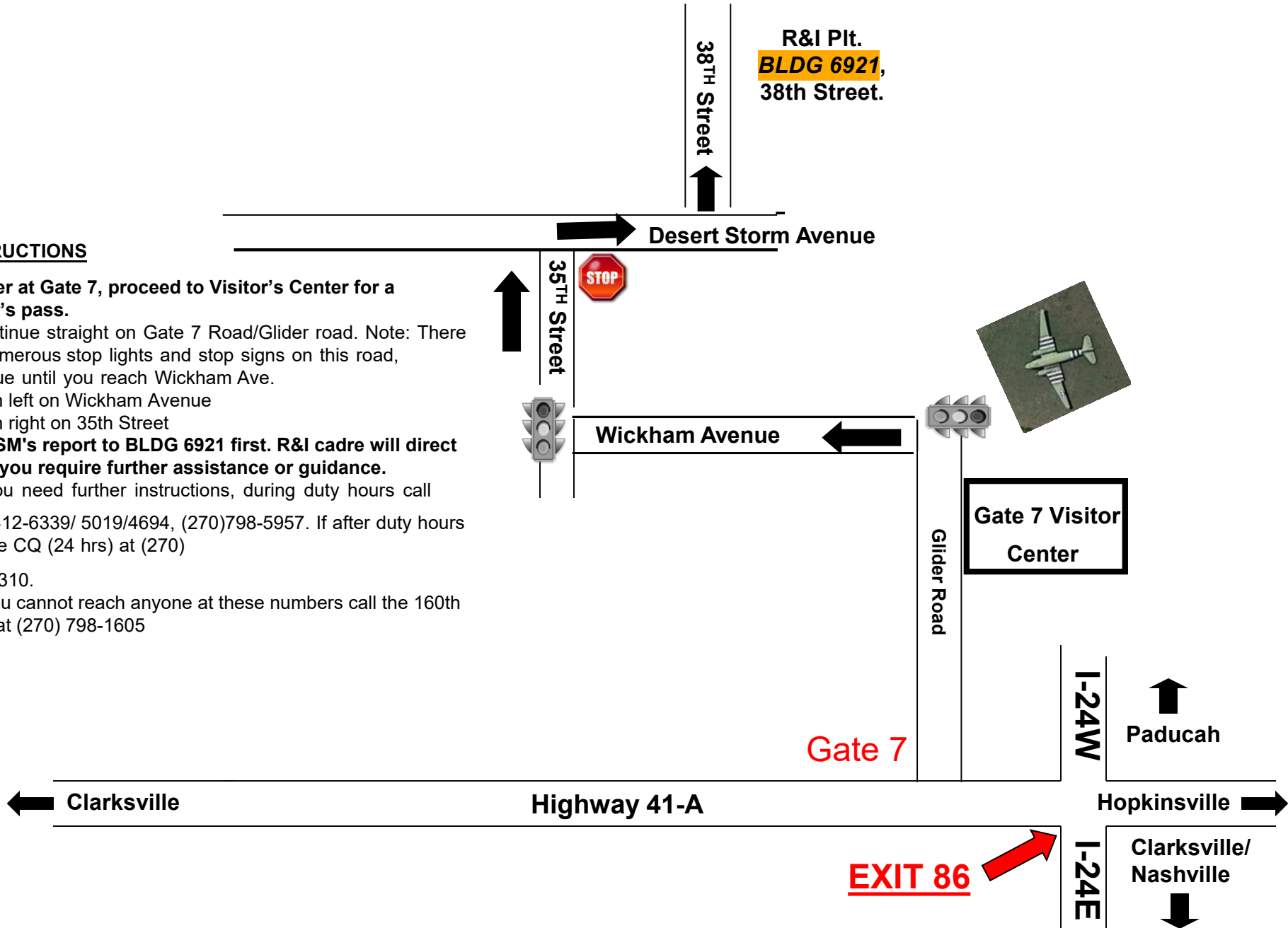


# STRIP MAP FROM GATE 7 TO BLDG 6921

**NOTE: THIS MAP IS NOT TO SCALE AND NOT ALL MINOR ROADS ARE LISTED!**

## INSTRUCTIONS

1. Enter at Gate 7, proceed to Visitor's Center for a visitor's pass.
2. Continue straight on Gate 7 Road/Glider road. Note: There are numerous stop lights and stop signs on this road, continue until you reach Wickham Ave.
3. Turn left on Wickham Avenue
4. Turn right on 35th Street
5. **All SM's report to BLDG 6921 first. R&I cadre will direct you if you require further assistance or guidance.**
6. If you need further instructions, during duty hours call (270)412-6339/ 5019/4694, (270)798-5957. If after duty hours call the CQ (24 hrs) at (270) 412-4310.
7. If you cannot reach anyone at these numbers call the 160th SDO at (270) 798-1605



R&I Plt.  
**BLDG 6921,**  
38th Street.

38<sup>TH</sup> Street

Desert Storm Avenue

35<sup>TH</sup> Street



Wickham Avenue

Glider Road

Gate 7 Visitor Center



I-24W

Paducah

Gate 7

Clarksville

Highway 41-A

Hopkinsville

**EXIT 86**

I-24E

Clarksville/  
Nashville